



Strathroy Middlesex General Hospital Foundation

395 Carrie Street

Strathroy, ON N7G 3J4

P: 519.246.5906

F: 519.245.5353

www.smghfoundation.com

July 11, 2024

MEDIA RELEASE

For Immediate Release

Strathroy Middlesex General Hospital Foundation (SMGH Foundation) launches the Advance & Renew fund-raising campaign Phase 1 Strathroy, ON –

SMGH Foundation is announcing Phase 1 of the largest ever fundraising campaign in its 35-year history with a phased approach to Advancing and Renewing of vital hospital patient care equipment at SMGH. Phase 1 of this multi-year fundraising campaign will focus on the equipment and renovations required to complete the MRI Suite located on the main floor of SMGH. The overall fundraising goal for this phase is \$8,640,000 and to finish Phase 1 an additional \$3,640,000 must be raised. The Board of Directors of SMGH Foundation is currently reviewing the overall capital and patient care equipment needs of the hospital over the next 5 years to establish a fundraising goal that will ensure money is available to support the Hospital's requests.

To officially launch the Advance & Renew Campaign the Foundation will soon announce three transformational donations toward the MRI Suite. Watch for these stories in the weeks to come.

The addition of the MRI suite within SMGH is a large step forward in health care in our community. The Foundation is excited to become part of this transformational growth of service by announcing this Campaign and partnering with our Hospital and their Board to ensure our community and health care professionals have quality state of the art equipment available to them at their local hospital. Mike McGuire, Chair SMGH Foundation.

The addition of an MRI Department at the Strathroy Middlesex General Hospital will provide greater diagnostic options for detection, staging and treatment for patients. In addition to being a crucial diagnostic tool for early detection, having an MRI in the Strathroy community will also open the pathway to shared regional strategies with LHSC/SJHC, cutting down on wait lists and improving patient centered quality care. With the ongoing growth of the Strathroy-Caradoc region and aging population, the new MRI will help SMGH serve its growing community and provide an advanced level of care to patients.



Strathroy Middlesex General Hospital Foundation

395 Carrie Street

Strathroy, ON N7G 3J4

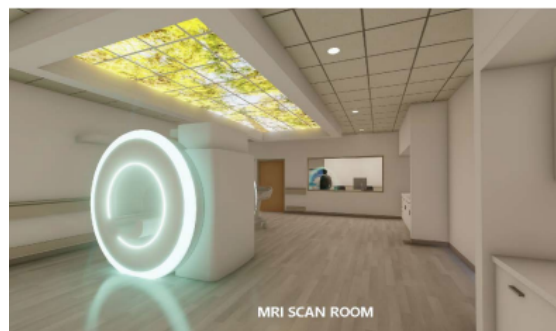
P: 519.246.5906

F: 519.245.5353

www.smghfoundation.com

We appreciate our SMGH Foundation for taking on this important campaign to raise funds for our new MRI in Strathroy, which is planned to be operational in spring 2025. The MRI at SMGH aligns perfectly with our new and recently released MHA Strategic Plan "Caring for our Communities: Building our Future Together". Please join the SMGH Foundation and MHA as they focus on the strategic priority Advance How We Deliver Care. With your financial support of the MRI Suite, we will be successful in expanding access to high quality care for our families and loved ones. We will be proud of the future we built together. Melanie Stanley, MHA Board Chair

Optional Image or rendering of floor plan



About Strathroy Middlesex General Hospital

Strathroy Middlesex General Hospital (SMGH) is a medium size community hospital located in Strathroy, ON. The hospital is committed to exceptional patient/family/caregiver care and experiences and meeting the evolving healthcare needs of the communities it serves.

About Strathroy Middlesex General Hospital Foundation

Through community philanthropy, Strathroy Middlesex General Hospital Foundation (SMGH Foundation) supports patient care, and the equipment needs at Strathroy Middlesex General Hospital (SMGH). As a charitable organization SMGH Foundation is dedicated to raising funds for the delivery of quality health care to the people of Strathroy and surrounding communities. The SMGH Foundation was incorporated as a registered charity in 1989 with the objective to encourage, manage and receive donations that support the needs of SMGH.

For more information, please contact:



Inspiring local giving to sustain Strathroy Middlesex General as a vibrant community hospital
Charitable Registration # 13297 4270 RR0001



Strathroy Middlesex General Hospital Foundation

395 Carrie Street

Strathroy, ON N7G 3J4

P: 519.246.5906

F: 519.245.5353

www.smghfoundation.com

Susan McLean, CFRE

CEO

Strathroy Middlesex General Hospital Foundation

www.smghfoundation.com

(o) 519-245-5632

(m) 519-521-5299

395 Carrie St. Strathroy ON N7G 3J4

smclean@smghfoundation.com